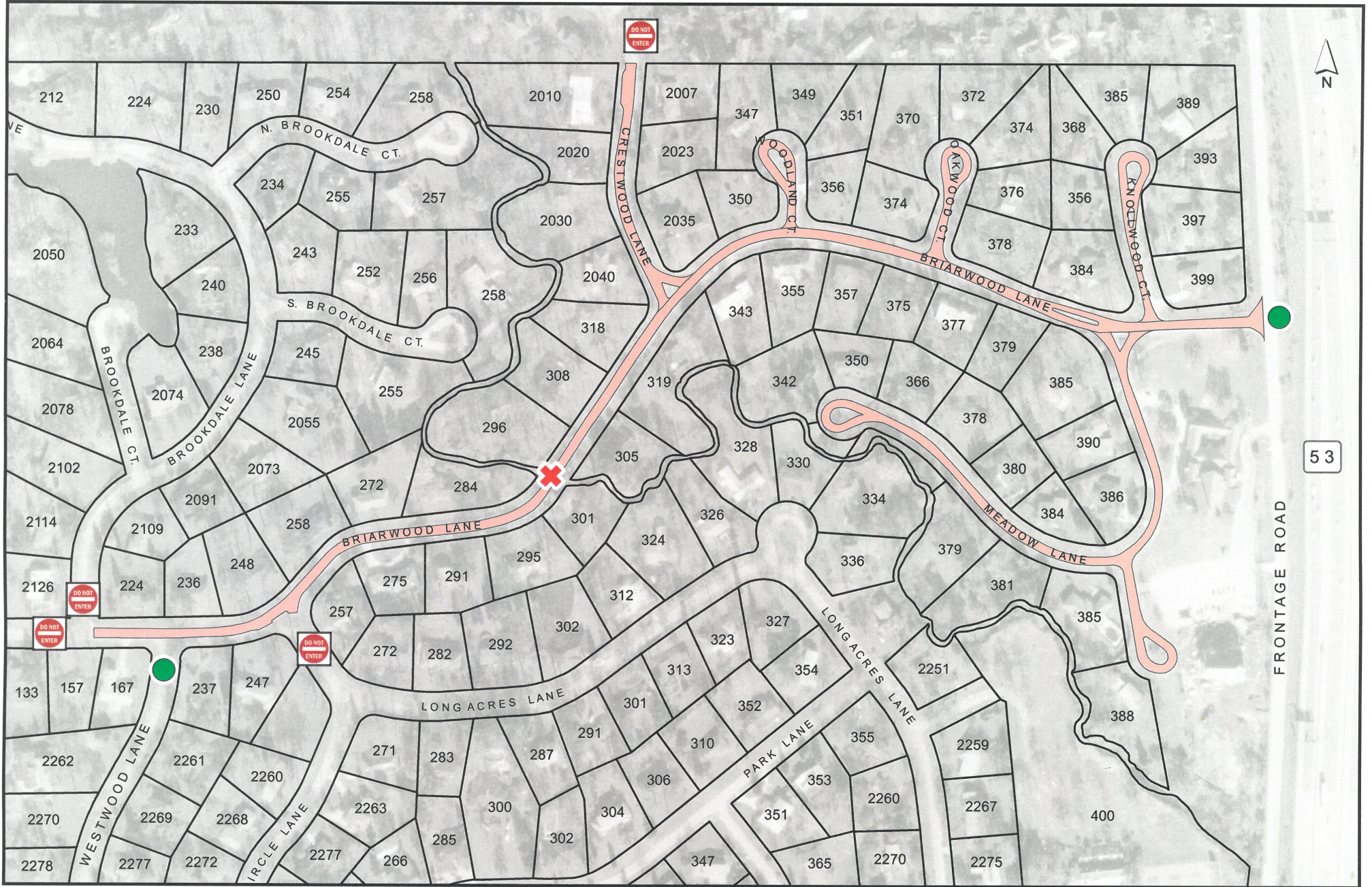
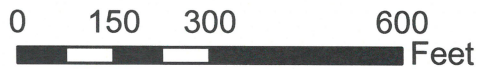


2018 RESURFACING PROJECT PLUM GROVE ESTATES SUBDIVISION



53



- ✕ Load Restriction - Bridge Crossing is prohibited
- Access Restriction - Neighboring Subdivision is prohibited
- Access Permission - Accessible to Algonquin Road

Palatine Township Road District
Aaron B. Del Mar - Highway Commissioner
 530 North Smith Street Palatine, IL 60067 p.: 847.358.6336

**PALATINE
 TWSP**